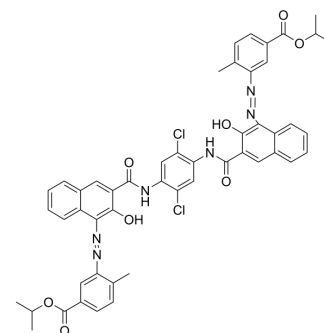


## C.I. Pigment red 221

Cat. No.:	HY-D0686
CAS No.:	71566-54-6
Molecular Formula:	C <sub>50</sub> H <sub>42</sub> Cl <sub>2</sub> N <sub>6</sub> O <sub>8</sub>
Molecular Weight:	925.81
Target:	Fluorescent Dye
Pathway:	Others
Storage:	Please store the product under the recommended conditions in the Certificate of Analysis.



## BIOLOGICAL ACTIVITY

### Description

C.I. Pigment red 221 is the most important colorant used to add color or change the color of something and is chemically essentially unaffected by the carrier or medium into which it is incorporated. It can be widely used in textile, medicine, food, cosmetics, plastics, paint, ink, photography and paper industries.

## REFERENCES

[1]. Gürses A, Açıkıldız M, Güneş K, et al. Dyes and pigments: their structure and properties[J]. Dyes and pigments, 2016: 13-29.

**Caution: Product has not been fully validated for medical applications. For research use only.**

Tel: 609-228-6898

Fax: 609-228-5909

E-mail: tech@MedChemExpress.com

Address: 1 Deer Park Dr, Suite Q, Monmouth Junction, NJ 08852, USA