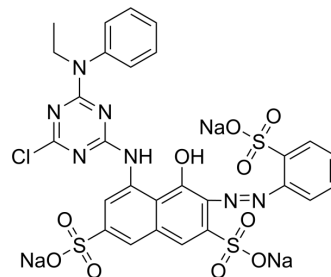


Reactive red 24:1

Cat. No.:	HY-D0700
CAS No.:	72829-25-5
Molecular Formula:	C ₂₇ H ₁₉ ClN ₇ Na ₃ O ₁₀ S ₃
Molecular Weight:	802.1
Target:	Fluorescent Dye
Pathway:	Others
Storage:	Please store the product under the recommended conditions in the Certificate of Analysis.



BIOLOGICAL ACTIVITY

Description

Reactive red 24:1 is common textile dyes that can be adsorbed onto single-walled carbon nanotubes (SWCNTs) through electrostatic interactions, allowing the separation of residual dyes.

REFERENCES

[1]. Machado F M, et al. Adsorption of Reactive Blue 4 dye from water solutions by carbon nanotubes: experiment and theory[J]. Physical Chemistry Chemical Physics, 2012, 14(31): 11139-11153.

Caution: Product has not been fully validated for medical applications. For research use only.

Tel: 609-228-6898

Fax: 609-228-5909

E-mail: tech@MedChemExpress.com

Address: 1 Deer Park Dr, Suite Q, Monmouth Junction, NJ 08852, USA