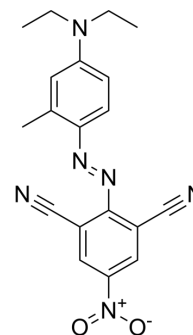


Disperse blue 366

Cat. No.:	HY-D0757
CAS No.:	84870-65-5
Molecular Formula:	C ₁₉ H ₁₈ N ₆ O ₂
Molecular Weight:	362.39
Target:	Fluorescent Dye
Pathway:	Others
Storage:	Please store the product under the recommended conditions in the Certificate of Analysis.



BIOLOGICAL ACTIVITY

Description	Disperse blue 366 is a blue dye commonly used for fiber dyeing.
-------------	---

REFERENCES

[1]. Koh J. Dyeing with disperse dyes[J]. Textile dyeing, 2011, 10: 195-220.

Caution: Product has not been fully validated for medical applications. For research use only.

Tel: 609-228-6898

Fax: 609-228-5909

E-mail: tech@MedChemExpress.com

Address: 1 Deer Park Dr, Suite Q, Monmouth Junction, NJ 08852, USA