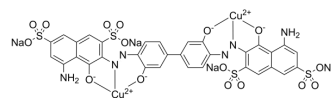


Direct blue 218

Cat. No.:	HY-D1035
CAS No.:	28407-37-6
Molecular Formula:	C ₃₂ H ₁₆ Cu ₂ N ₆ Na ₄ O ₁₆ S ₄
Molecular Weight:	1087.81
Target:	Fluorescent Dye
Pathway:	Others
Storage:	Please store the product under the recommended conditions in the Certificate of Analysis.



BIOLOGICAL ACTIVITY

Description

Direct blue 218 is a good dyeing agent for cotton fabrics.

REFERENCES

[1]. Sawada K, Ueda M. Adsorption behavior of direct dye on cotton in non-aqueous media[J]. Dyes and pigments, 2003, 58(1): 37-40.

Caution: Product has not been fully validated for medical applications. For research use only.

Tel: 609-228-6898

Fax: 609-228-5909

E-mail: tech@MedChemExpress.com

Address: 1 Deer Park Dr, Suite Q, Monmouth Junction, NJ 08852, USA