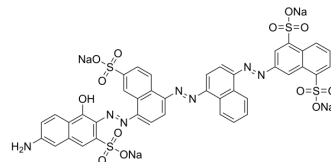


Direct Blue 71

Cat. No.:	HY-D1196
CAS No.:	4399-55-7
Molecular Formula:	C ₄₀ H ₂₃ N ₇ Na ₄ O ₁₃ S ₄
Molecular Weight:	1029.87
Target:	Fluorescent Dye
Pathway:	Others
Storage:	Please store the product under the recommended conditions in the Certificate of Analysis.



BIOLOGICAL ACTIVITY

Description

Direct Blue 71 is a good dyeing agent for cotton fabrics and can be adsorbed by palm ash and removed from the aqueous solution.

REFERENCES

[1]. Ahmad AA, Hameed B H, Aziz N. Adsorption of direct dye on palm ash: Kinetic and equilibrium modeling[J]. Journal of hazardous materials, 2007, 141(1): 70-76.

Caution: Product has not been fully validated for medical applications. For research use only.

Tel: 609-228-6898

Fax: 609-228-5909

E-mail: tech@MedChemExpress.com

Address: 1 Deer Park Dr, Suite Q, Monmouth Junction, NJ 08852, USA