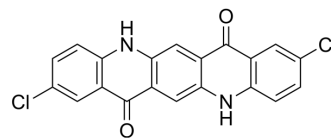


Pigment red 202

Cat. No.:	HY-D1233
CAS No.:	3089-17-6
Molecular Formula:	C ₂₀ H ₁₀ Cl ₂ N ₂ O ₂
Molecular Weight:	381.21
Target:	Fluorescent Dye
Pathway:	Others
Storage:	Please store the product under the recommended conditions in the Certificate of Analysis.



BIOLOGICAL ACTIVITY

Description

Pigment Red 202 is a commonly used commercial dye for bulk coloring of plastics and synthetic fibers and for surface coatings such as paints and inks.

REFERENCES

[1]. Curry C J, Rendle D F, Rogers A. Pigment analysis in the forensic examination of paints. I. Pigment analysis by x-ray powder diffraction[J]. Journal of the Forensic Science Society, 1982, 22(2): 173-177.

Caution: Product has not been fully validated for medical applications. For research use only.

Tel: 609-228-6898

Fax: 609-228-5909

E-mail: tech@MedChemExpress.com

Address: 1 Deer Park Dr, Suite Q, Monmouth Junction, NJ 08852, USA