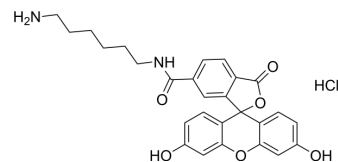


## FAM amine, 6-isomer

Cat. No.:	HY-D1336
CAS No.:	2183440-42-6
Molecular Formula:	C <sub>27</sub> H <sub>27</sub> ClN <sub>2</sub> O <sub>6</sub>
Molecular Weight:	510.97
Target:	Fluorescent Dye
Pathway:	Others
Storage:	Please store the product under the recommended conditions in the Certificate of Analysis.



### BIOLOGICAL ACTIVITY

#### Description

FAM amine, 6-isomer is a fluorescein derivative with an amine group and contains an isomer of the fluorophore. Can be used to modify biomolecules through enzymatic transamination. Its fatty amine groups can also react with electrophiles such as activated esters. The amine can also be conjugated to carbonyl compounds (aldehydes and ketones) by reductive amination.

### REFERENCES

[1]. Hung S C, Ju J, Mathies R A, et al. Cyanine dyes with high absorption cross section as donor chromophores in energy transfer primers1[J]. Analytical biochemistry, 1996, 243(1): 15-27.

**Caution: Product has not been fully validated for medical applications. For research use only.**

Tel: 609-228-6898

Fax: 609-228-5909

E-mail: tech@MedChemExpress.com

Address: 1 Deer Park Dr, Suite Q, Monmouth Junction, NJ 08852, USA