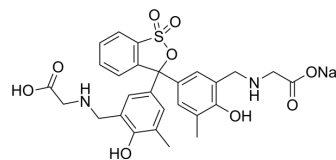


Glycine cresol red

Cat. No.:	HY-D1536
CAS No.:	77031-64-2
Molecular Formula:	C ₂₇ H ₂₇ N ₂ NaO ₉ S
Molecular Weight:	578.57
Target:	Fluorescent Dye
Pathway:	Others
Storage:	Please store the product under the recommended conditions in the Certificate of Analysis.



BIOLOGICAL ACTIVITY

Description

Glycine cresol red is a complexometric indicator. Glycine cresol red forms coloured complexes with Al³⁺, Ga³⁺ and In³⁺ ions in aqueous solutions. Glycine cresol red can be used for the spectrophotometric determination of inorganic ions. Glycine cresol red can be used as a stain in neurohistology^{[1][2]}.

REFERENCES

[1]. Panchenko KI, et al. Ispol'zovanie kompleksonometricheskogo indikatora gliitsinkrezolovogo krasnogo kak krasitelia v neirogistologii [The use of the complexometric indicator glycine cresol red as a stain in neurohistology]. Sud Med Ekspert. 1997 Jan-Mar;40(1):46-7. Russian.

[2]. K. C. Srivastava, et al. A Spectrophotometric Study on Complex Formation of Tungsten (VI) with Glycine Cresol Red. 1975.

Caution: Product has not been fully validated for medical applications. For research use only.

Tel: 609-228-6898

Fax: 609-228-5909

E-mail: tech@MedChemExpress.com

Address: 1 Deer Park Dr, Suite Q, Monmouth Junction, NJ 08852, USA