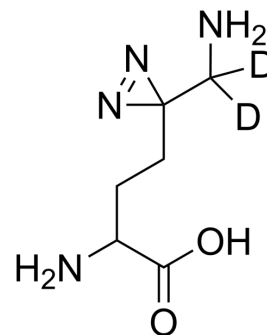


Photo-DL-lysine-d₂

Cat. No.:	HY-D2283S
Molecular Formula:	C ₆ H ₁₀ D ₂ N ₄ O ₂
Molecular Weight:	174.2
Target:	Isotope-Labeled Compounds
Pathway:	Others
Storage:	Please store the product under the recommended conditions in the Certificate of Analysis.



BIOLOGICAL ACTIVITY

Description

Photo-DL-lysine-d₂ is the deuterium labeled Photo-DL-lysine (HY-D2283). Photo-DL-lysine is a DL-lysine-based photo-reactive amino acid, captures proteins that bind lysine post-translational modifications^[1].

REFERENCES

[1]. Tangpo Yang, et al. Photo-lysine captures proteins that bind lysine post-translational modifications. Nat Chem Biol. 2016 Feb;12(2):70-2.

Caution: Product has not been fully validated for medical applications. For research use only.

Tel: 609-228-6898

Fax: 609-228-5909

E-mail: tech@MedChemExpress.com

Address: 1 Deer Park Dr, Suite Q, Monmouth Junction, NJ 08852, USA