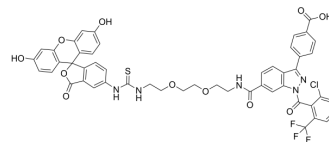


ROR γ allosteric probe-1

Cat. No.:	HY-D2293
CAS No.:	2983890-50-0
Molecular Formula:	C ₅₀ H ₃₇ ClF ₃ N ₅ O ₁₁ S
Molecular Weight:	1008.37
Target:	ROR; Fluorescent Dye
Pathway:	Metabolic Enzyme/Protease; Vitamin D Related/Nuclear Receptor; Others
Storage:	Please store the product under the recommended conditions in the Certificate of Analysis.



BIOLOGICAL ACTIVITY

Description	ROR γ allosteric probe-1 (Compound 12h) is a ROR γ allosteric fluorescent probe (Ex/Em: 490/524 nm). ROR γ allosteric probe-1 can be used for exploration of ROR γ allosteric inhibitors and ROR γ function ^[1] .
IC ₅₀ & Target	ROR γ
In Vivo	ROR γ allosteric probe-1 (1 μ M, incubation with the Zebrafish, at 12 h) shows fluorescence in the liver and intestines under the green channel, which is consistent with the ROR γ expression profile reported ^[1] . MCE has not independently confirmed the accuracy of these methods. They are for reference only.

REFERENCES

[1]. Yu YC, et al. Discovery of ROR γ Allosteric Fluorescent Probes and Their Application: Fluorescence Polarization, Screening, and Bioimaging. J Med Chem. 2024 Mar 14;67(5):4194-4224.

Caution: Product has not been fully validated for medical applications. For research use only.

Tel: 609-228-6898

Fax: 609-228-5909

E-mail: tech@MedChemExpress.com

Address: 1 Deer Park Dr, Suite Q, Monmouth Junction, NJ 08852, USA