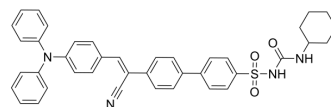


AIE-ER

Cat. No.:	HY-D2299
CAS No.:	2653341-17-2
Molecular Formula:	C ₄₀ H ₃₆ N ₄ O ₃ S
Molecular Weight:	652.8
Target:	Fluorescent Dye
Pathway:	Others
Storage:	Please store the product under the recommended conditions in the Certificate of Analysis.



BIOLOGICAL ACTIVITY

Description	AIE-ER is a specific endoplasmic reticulum (ER) fluorescent probe (green channel: λ_{ex} =405 nm, λ_{em} =450~650 nm) that exhibits remarkable photostability, high brightness, and low working concentration. AIE-ER may provide an avenue for studying diseases related to the endoplasmic reticulum ^[1] .
In Vitro	AIE-ER (1-10 μ M; 24 h) exhibits low cytotoxicity in HeLa cells, maintaining good cell viability (> 75%) even at a concentration of 10 μ M ^[1] . MCE has not independently confirmed the accuracy of these methods. They are for reference only.

REFERENCES

[1]. Xiao P, et al. An aggregation-induced emission platform for efficient Golgi apparatus and endoplasmic reticulum specific imaging. Chem Sci. 2021;12(41):13949-13957. Published 2021 Oct 5.

Caution: Product has not been fully validated for medical applications. For research use only.

Tel: 609-228-6898

Fax: 609-228-5909

E-mail: tech@MedChemExpress.com

Address: 1 Deer Park Dr, Suite Q, Monmouth Junction, NJ 08852, USA