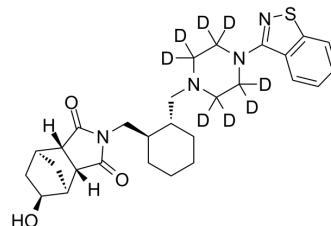


Lurasidone Metabolite 14326-d₈

Cat. No.:	HY-G0002S
Molecular Formula:	C ₂₈ H ₂₈ D ₈ N ₄ O ₃ S
Molecular Weight:	516.72
Target:	Drug Metabolite; Isotope-Labeled Compounds
Pathway:	Metabolic Enzyme/Protease; Others
Storage:	Please store the product under the recommended conditions in the Certificate of Analysis.



BIOLOGICAL ACTIVITY

Description

Lurasidone Metabolite 14326-d₈ is the deuterium labeled Lurasidone Metabolite 14326, which is a metabolite of Lurasidone.

Caution: Product has not been fully validated for medical applications. For research use only.

Tel: 609-228-6898

Fax: 609-228-5909

E-mail: tech@MedChemExpress.com

Address: 1 Deer Park Dr, Suite Q, Monmouth Junction, NJ 08852, USA