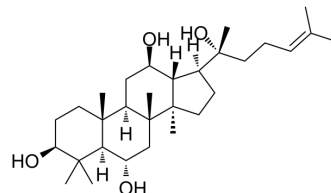


## 20(R)-Protopanaxatriol

Cat. No.:	HY-N0798
CAS No.:	1453-93-6
Molecular Formula:	C <sub>30</sub> H <sub>52</sub> O <sub>4</sub>
Molecular Weight:	476.73
Target:	Others
Pathway:	Others
Storage:	<div> <div>Powder</div> <div> -20°C 3 years 4°C 2 years </div> </div> <div> <div>In solvent</div> <div> -80°C 6 months -20°C 1 month </div> </div>



### SOLVENT & SOLUBILITY

#### In Vitro

DMSO : ≥ 32 mg/mL (67.12 mM)  
\* "≥" means soluble, but saturation unknown.

	Solvent Concentration	Mass		
		1 mg	5 mg	10 mg
Preparing Stock Solutions	1 mM	2.0976 mL	10.4881 mL	20.9762 mL
	5 mM	0.4195 mL	2.0976 mL	4.1952 mL
	10 mM	0.2098 mL	1.0488 mL	2.0976 mL

Please refer to the solubility information to select the appropriate solvent.

### BIOLOGICAL ACTIVITY

#### Description

20(R)-Protopanaxatriol is a natural aglycone of ginsenosides Re, Rf, Rg1, Rg2 and Rh.

#### In Vitro

20(R)-Protopanaxatriol is a natural aglycone of ginsenosides Re, Rf, Rg1, Rg2 and Rh<sup>[1]</sup>.  
MCE has not independently confirmed the accuracy of these methods. They are for reference only.

### REFERENCES

[1]. Bai L, et al. Therapeutic Potential of Ginsenosides as an Adjuvant Treatment for Diabetes. Front Pharmacol. 2018 May 1;9:423.

---

**Caution: Product has not been fully validated for medical applications. For research use only.**

Tel: 609-228-6898

Fax: 609-228-5909

E-mail: [tech@MedChemExpress.com](mailto:tech@MedChemExpress.com)

Address: 1 Deer Park Dr, Suite Q, Monmouth Junction, NJ 08852, USA