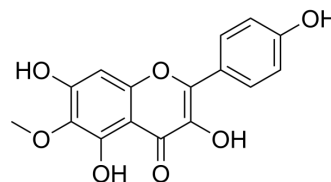


6-Methoxykaempferol

Cat. No.:	HY-N10699
CAS No.:	32520-55-1
Molecular Formula:	C ₁₆ H ₁₂ O ₇
Molecular Weight:	316.26
Target:	Others
Pathway:	Others
Storage:	Please store the product under the recommended conditions in the Certificate of Analysis.



BIOLOGICAL ACTIVITY

Description	6-Methoxykaempferol is a flavone that can be found in brazilian propolis. 6-Methoxykaempferol shows anti-proliferative activity for cancer cells ^[1] .								
In Vitro	<p>6-Methoxykaempferol (0-200 μM; 24 h) shows anti-proliferative effect with IC₅₀s of 101.8, >200, 125.1 μM for DLD-1, MCF-7, A549 cells, respectively^[1].</p> <p>MCE has not independently confirmed the accuracy of these methods. They are for reference only.</p> <p>Cell Proliferation Assay^[1]</p> <table border="1"> <tr> <td>Cell Line:</td> <td>DLD-1, MCF-7, A549 cells</td> </tr> <tr> <td>Concentration:</td> <td>0-200 μM</td> </tr> <tr> <td>Incubation Time:</td> <td>24 h</td> </tr> <tr> <td>Result:</td> <td>Showed anti-proliferative effect with IC₅₀s of 101.8, >200, 125.1 μM for DLD-1, MCF-7, A549 cells, respectively.</td> </tr> </table>	Cell Line:	DLD-1, MCF-7, A549 cells	Concentration:	0-200 μM	Incubation Time:	24 h	Result:	Showed anti-proliferative effect with IC ₅₀ s of 101.8, >200, 125.1 μM for DLD-1, MCF-7, A549 cells, respectively.
Cell Line:	DLD-1, MCF-7, A549 cells								
Concentration:	0-200 μM								
Incubation Time:	24 h								
Result:	Showed anti-proliferative effect with IC ₅₀ s of 101.8, >200, 125.1 μM for DLD-1, MCF-7, A549 cells, respectively.								

REFERENCES

[1]. Mitsui T, et al. Chemical constituents of Brazilian Propolis from the state of Bahia and their growth inhibitory activities against cancer cells. Biosci Biotechnol Biochem. 2018 Mar;82(3):417-421.

Caution: Product has not been fully validated for medical applications. For research use only.

Tel: 609-228-6898

Fax: 609-228-5909

E-mail: tech@MedChemExpress.com

Address: 1 Deer Park Dr, Suite Q, Monmouth Junction, NJ 08852, USA