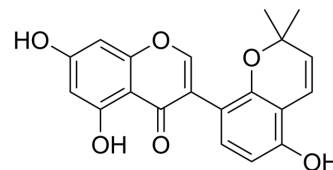


Sophoraisoflavone A

Cat. No.:	HY-N1230
CAS No.:	117204-81-6
Molecular Formula:	C ₂₀ H ₁₆ O ₆
Molecular Weight:	352.34
Target:	Phosphatase
Pathway:	Metabolic Enzyme/Protease
Storage:	Please store the product under the recommended conditions in the Certificate of Analysis.



BIOLOGICAL ACTIVITY

Description

Sophoraisoflavone A (Alloicoisoflavone B) is a nature product that could be isolated from *Glycyrrhiza inflata*. Sophoraisoflavone A is a potent protein tyrosine phosphatase 1B (PTP1B) inhibitor with an IC₅₀ value of 0.80 μM. Sophoraisoflavone A can be used in research of inflammation^[1].

REFERENCES

[1]. Lin Y, et, al. Screening for bioactive natural products from a 67-compound library of *Glycyrrhiza inflata*. *Bioorg Med Chem*. 2017 Jul 15;25(14):3706-3713.

Caution: Product has not been fully validated for medical applications. For research use only.

Tel: 609-228-6898

Fax: 609-228-5909

E-mail: tech@MedChemExpress.com

Address: 1 Deer Park Dr, Suite Q, Monmouth Junction, NJ 08852, USA