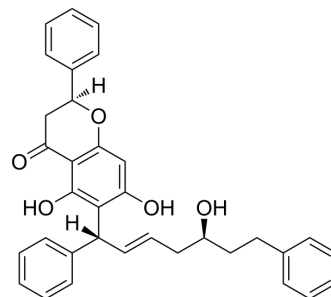


Typhatifolin B

Cat. No.:	HY-N12603
Molecular Formula:	C ₃₄ H ₃₂ O ₅
Molecular Weight:	520.61
Target:	Apoptosis
Pathway:	Apoptosis
Storage:	Please store the product under the recommended conditions in the Certificate of Analysis.



BIOLOGICAL ACTIVITY

Description	Typhatifolin B (Compd 2), an anti-cancer agent, could remarkably induce cell apoptosis and G0/G1 cycle arrest, as well as block cell migration and invasion ^[1] .
In Vitro	Typhatifolin B (Compd 2) exhibits IC ₅₀ values of 4.33 μM, 8.64 μM, 2.82 μM, 2.20 μM, 3.21 μM, 5.27 μM in MDA-MB231, MCF-7, 4T1, HeLa, A549, BEAS-2B, HFF cells, respectively ^[1] . MCE has not independently confirmed the accuracy of these methods. They are for reference only.

REFERENCES

[1]. Yu-Peng Li, et al. Rare flavanone-diarylheptanoid hybrids from *Typha angustifolia* shows anti breast cancer activity via activating TGF-β1/Smad signaling pathway. *European Journal of Medicinal Chemistry*. Volume 268, 15 March 2024, 116220.

Caution: Product has not been fully validated for medical applications. For research use only.

Tel: 609-228-6898

Fax: 609-228-5909

E-mail: tech@MedChemExpress.com

Address: 1 Deer Park Dr, Suite Q, Monmouth Junction, NJ 08852, USA