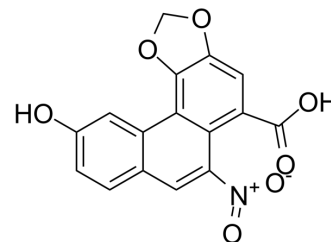


Aristolochic acid C

Cat. No.:	HY-N1450
CAS No.:	4849-90-5
Molecular Formula:	C ₁₆ H ₉ NO ₇
Molecular Weight:	327.25
Target:	Phospholipase
Pathway:	Metabolic Enzyme/Protease
Storage:	4°C, protect from light * In solvent : -80°C, 6 months; -20°C, 1 month (protect from light)



SOLVENT & SOLUBILITY

In Vitro	DMSO : 125 mg/mL (381.97 mM; Need ultrasonic)					
	Preparing Stock Solutions	<div><div>Solvent</div><div>Concentration</div></div>	Mass	1 mg	5 mg	10 mg
		1 mM		3.0558 mL	15.2788 mL	30.5577 mL
		5 mM		0.6112 mL	3.0558 mL	6.1115 mL
		10 mM		0.3056 mL	1.5279 mL	3.0558 mL
Please refer to the solubility information to select the appropriate solvent.						
In Vivo	1. Add each solvent one by one: 10% DMSO >> 40% PEG300 >> 5% Tween-80 >> 45% saline Solubility: ≥ 2.08 mg/mL (6.36 mM); Clear solution					

BIOLOGICAL ACTIVITY

Description	Aristolochic acid C is a derivative of Aristolochic acid. Aristolochic acid is a phospholipase A ₂ (PLA ₂) inhibitor, which disrupts cortical microtubule arrays and root growth in Arabidopsis ^[1] .
-------------	---

REFERENCES

[1]. Gardiner J, et al. The phospholipase A₂ inhibitor, aristolochic acid, disrupts cortical microtubule arrays and root growth in Arabidopsis. Plant Biol (Stuttg). 2008 Nov;10(6):725-31.

Caution: Product has not been fully validated for medical applications. For research use only.

Tel: 609-228-6898

Fax: 609-228-5909

E-mail: tech@MedChemExpress.com

Address: 1 Deer Park Dr, Suite Q, Monmouth Junction, NJ 08852, USA