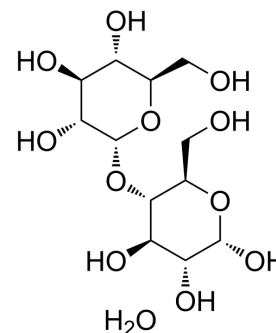


## Maltose monohydrate

Cat. No.:	HY-N2024A
CAS No.:	6363-53-7
Molecular Formula:	C <sub>12</sub> H <sub>24</sub> O <sub>12</sub>
Molecular Weight:	360.31
Target:	Endogenous Metabolite
Pathway:	Metabolic Enzyme/Protease
Storage:	4°C, protect from light * In solvent : -80°C, 6 months; -20°C, 1 month (protect from light)



### SOLVENT & SOLUBILITY

In Vitro	H <sub>2</sub> O : 100 mg/mL (277.54 mM; Need ultrasonic)						
	Preparing Stock Solutions	Solvent Concentration	Mass	1 mg	5 mg	10 mg	
				1 mM	2.7754 mL	13.8769 mL	27.7539 mL
				5 mM	0.5551 mL	2.7754 mL	5.5508 mL
				10 mM	0.2775 mL	1.3877 mL	2.7754 mL
Please refer to the solubility information to select the appropriate solvent.							
In Vivo	1. Add each solvent one by one: PBS Solubility: 100 mg/mL (277.54 mM); Clear solution; Need ultrasonic						

### BIOLOGICAL ACTIVITY

Description	Maltose monohydrate is the energy source for bacteria.
IC <sub>50</sub> & Target	Human Endogenous Metabolite

### CUSTOMER VALIDATION

- Molecules. 2023 Apr 11, 28(8), 3375.

See more customer validations on [www.MedChemExpress.com](http://www.MedChemExpress.com)

### REFERENCES

---

[1]. Namavari M, et al. Synthesis of [ $^{18}\text{F}$ ]-labelled maltose derivatives as PET tracers for imaging bacterial infection. Mol Imaging Biol. 2015 Apr;17(2):168-76.

---

**Caution: Product has not been fully validated for medical applications. For research use only.**

Tel: 609-228-6898

Fax: 609-228-5909

E-mail: [tech@MedChemExpress.com](mailto:tech@MedChemExpress.com)

Address: 1 Deer Park Dr, Suite Q, Monmouth Junction, NJ 08852, USA