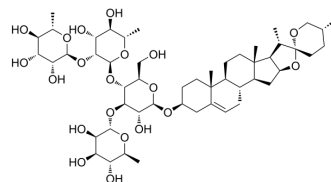


Polyphyllin E

Cat. No.:	HY-N2386
CAS No.:	76296-73-6
Molecular Formula:	C ₅₁ H ₈₂ O ₂₀
Molecular Weight:	1015.18
Target:	Others
Pathway:	Others
Storage:	Please store the product under the recommended conditions in the Certificate of Analysis.



BIOLOGICAL ACTIVITY

Description

Polyphyllin E is a steroidal saponin that can be isolated from Paris polyphylla^[1].

REFERENCES

[1]. Shuli Man, et al. Characterization of steroidal saponins in saponin extract from Paris polyphylla by liquid chromatography tandem multi-stage mass spectrometry. Anal Bioanal Chem. 2009 Sep;395(2):495-505.

Caution: Product has not been fully validated for medical applications. For research use only.

Tel: 609-228-6898

Fax: 609-228-5909

E-mail: tech@MedChemExpress.com

Address: 1 Deer Park Dr, Suite Q, Monmouth Junction, NJ 08852, USA