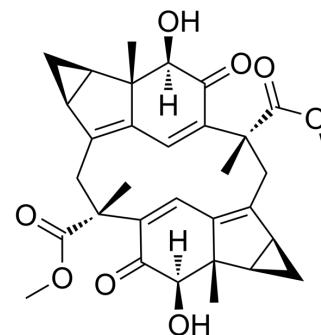


Cycloshizukaol A

Cat. No.:	HY-N3671
CAS No.:	150033-85-5
Molecular Formula:	C ₃₂ H ₃₆ O ₈
Molecular Weight:	548.62
Target:	Others
Pathway:	Others
Storage:	Please store the product under the recommended conditions in the Certificate of Analysis.



BIOLOGICAL ACTIVITY

Description

Cycloshizukaol A is a symmetrical cyclic lindenane dimer with C₂ symmetry. Cycloshizukaol A can be isolated from the root of *Chloranthus serratus*^[1].

REFERENCES

[1]. Kawabata J, et al. Symmetric sesquiterpene dimer from *Chloranthus serratus*[J]. *Phytochemistry*, 1993, 32(5): 1347-1349.

Caution: Product has not been fully validated for medical applications. For research use only.

Tel: 609-228-6898

Fax: 609-228-5909

E-mail: tech@MedChemExpress.com

Address: 1 Deer Park Dr, Suite Q, Monmouth Junction, NJ 08852, USA