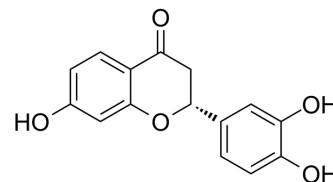


## (+)-Butin

<b>Cat. No.:</b>	HY-N6020A		
<b>CAS No.:</b>	74628-42-5		
<b>Molecular Formula:</b>	C <sub>15</sub> H <sub>12</sub> O <sub>5</sub>		
<b>Molecular Weight:</b>	272.25		
<b>Target:</b>	Others		
<b>Pathway:</b>	Others		
<b>Storage:</b>	Powder	-20°C	3 years
		4°C	2 years
	In solvent	-80°C	6 months
		-20°C	1 month



### SOLVENT & SOLUBILITY

#### In Vitro

DMSO : 180 mg/mL (661.16 mM; Need ultrasonic)

Concentration	Solvent	Mass		
		1 mg	5 mg	10 mg
Preparing Stock Solutions	1 mM	3.6731 mL	18.3655 mL	36.7309 mL
	5 mM	0.7346 mL	3.6731 mL	7.3462 mL
	10 mM	0.3673 mL	1.8365 mL	3.6731 mL

Please refer to the solubility information to select the appropriate solvent.

#### In Vivo

- Add each solvent one by one: 10% DMSO >> 40% PEG300 >> 5% Tween-80 >> 45% saline  
Solubility: ≥ 4.5 mg/mL (16.53 mM); Clear solution
- Add each solvent one by one: 10% DMSO >> 90% (20% SBE-β-CD in saline)  
Solubility: ≥ 4.5 mg/mL (16.53 mM); Clear solution
- Add each solvent one by one: 10% DMSO >> 90% corn oil  
Solubility: ≥ 4.5 mg/mL (16.53 mM); Clear solution

### BIOLOGICAL ACTIVITY

#### Description

(+)-Butin is the R enantiomer of Butin. Butin is a major biologically active flavonoid isolated from the heartwood of *Dalbergia odorifera*, with strong antioxidant, antiplatelet and anti-inflammatory activities<sup>[1]</sup>.

### REFERENCES

---

[1]. Duan J, et al. Protective effect of butin against ischemia/reperfusion-induced myocardial injury in diabetic mice: involvement of the AMPK/GSK-3 $\beta$ /Nrf2 signaling pathway. Sci Rep. 2017;7:41491. Published 2017 Jan 27.

---

**Caution: Product has not been fully validated for medical applications. For research use only.**

Tel: 609-228-6898

Fax: 609-228-5909

E-mail: [tech@MedChemExpress.com](mailto:tech@MedChemExpress.com)

Address: 1 Deer Park Dr, Suite Q, Monmouth Junction, NJ 08852, USA