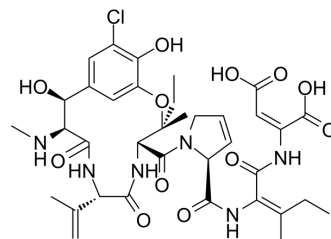


Phomopsin A

Cat. No.:	HY-N6793
CAS No.:	64925-80-0
Molecular Formula:	C ₃₆ H ₄₅ ClN ₆ O ₁₂
Molecular Weight:	789.23
Target:	Microtubule/Tubulin
Pathway:	Cell Cycle/DNA Damage; Cytoskeleton
Storage:	<div>Powder -20°C 3 years</div> <div>In solvent -80°C 6 months</div> <div> -20°C 1 month</div>



SOLVENT & SOLUBILITY

In Vitro

DMSO : 10 mg/mL (12.67 mM; Need ultrasonic and warming)

	Solvent Concentration	Mass	1 mg	5 mg	10 mg
Preparing Stock Solutions	1 mM		1.2671 mL	6.3353 mL	12.6706 mL
	5 mM		0.2534 mL	1.2671 mL	2.5341 mL
	10 mM		0.1267 mL	0.6335 mL	1.2671 mL

Please refer to the solubility information to select the appropriate solvent.

BIOLOGICAL ACTIVITY

Description

Phomopsin A is a cyclic hexapeptide mycotoxin isolated from the fungus *Phomopsis leptostomiformis*. Phomopsin A is a noncompetitive inhibitor of the binding of radiolabeled vincristine to tubulin^[1].

REFERENCES

[1]. Hamel E, et al. Natural products which interact with tubulin in the vinca domain: maytansine, rhizoxin, phomopsin A, dolastatins 10 and 15 and halichondrin B. *Pharmacol Ther.* 1992;55(1):31-51.

Caution: Product has not been fully validated for medical applications. For research use only.

Tel: 609-228-6898

Fax: 609-228-5909

E-mail: tech@MedChemExpress.com

Address: 1 Deer Park Dr, Suite Q, Monmouth Junction, NJ 08852, USA