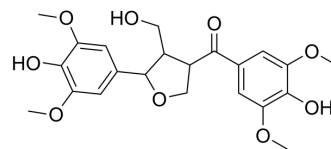


Ciwujiatone

Cat. No.:	HY-N7331
CAS No.:	218901-26-9
Molecular Formula:	C ₂₂ H ₂₆ O ₉
Molecular Weight:	434.44
Target:	Others
Pathway:	Others
Storage:	Please store the product under the recommended conditions in the Certificate of Analysis.



BIOLOGICAL ACTIVITY

Description	Ciwujiatone is a natural lignan compound ^[1] .
-------------	---

REFERENCES

[1]. Guo-Kai Wang, et al. A new sesquiterpene from *Kalimeris integrifolia*. *Nat Prod Res.* 2018 May;32(9):1004-1009.

Caution: Product has not been fully validated for medical applications. For research use only.

Tel: 609-228-6898

Fax: 609-228-5909

E-mail: tech@MedChemExpress.com

Address: 1 Deer Park Dr, Suite Q, Monmouth Junction, NJ 08852, USA