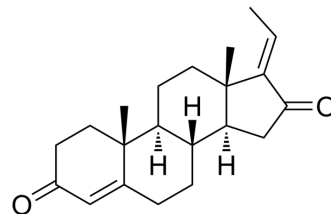


(-)-(E)-Guggulsterone (Standard)

Cat. No.:	HY-N7781R
CAS No.:	39025-24-6
Molecular Formula:	C ₂₁ H ₂₈ O ₂
Molecular Weight:	312.45
Target:	Drug Metabolite
Pathway:	Metabolic Enzyme/Protease
Storage:	Please store the product under the recommended conditions in the Certificate of Analysis.



SOLVENT & SOLUBILITY

In Vitro

DMSO : 25 mg/mL (80.01 mM; ultrasonic and warming and heat to 60°C)

Preparing Stock Solutions	Solvent Concentration	Mass		
		1 mg	5 mg	10 mg
	1 mM	3.2005 mL	16.0026 mL	32.0051 mL
	5 mM	0.6401 mL	3.2005 mL	6.4010 mL
	10 mM	0.3201 mL	1.6003 mL	3.2005 mL

Please refer to the solubility information to select the appropriate solvent.

BIOLOGICAL ACTIVITY

Description

(-)-(E)-Guggulsterone (Standard) is the analytical standard of (-)-(E)-Guggulsterone. This product is intended for research and analytical applications. (-)-(E)-Guggulsterone is the metabolite of Z-guggulsterone. Guggulsterone is an active constituent of guggulipid, an ayurvedic agent derived from *Commiphora mukul*. Guggulsterone has hypolipidaemic activity [1].

Caution: Product has not been fully validated for medical applications. For research use only.

Tel: 609-228-6898

Fax: 609-228-5909

E-mail: tech@MedChemExpress.com

Address: 1 Deer Park Dr, Suite Q, Monmouth Junction, NJ 08852, USA