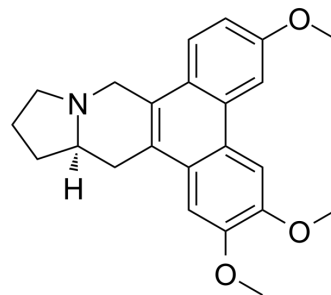


## (-)-Antofine

Cat. No.:	HY-N8052
CAS No.:	32671-82-2
Molecular Formula:	C <sub>23</sub> H <sub>25</sub> NO <sub>3</sub>
Molecular Weight:	363.45
Target:	Others
Pathway:	Others
Storage:	Please store the product under the recommended conditions in the Certificate of Analysis.



### BIOLOGICAL ACTIVITY

Description	(-)-Antofine is an alkaloid, a levorotatory Antofine. Antofine is an antifungal compound <sup>[1]</sup> .
-------------	---

### REFERENCES

[1]. Xin Z, et al. Isolation of antofine from *Cynanchum atratum* BUNGE (Asclepiadaceae) and its antifungal activity against *Penicillium digitatum*[J]. *Postharvest Biology and Technology*, 2019, 157: 110961.

**Caution: Product has not been fully validated for medical applications. For research use only.**

Tel: 609-228-6898

Fax: 609-228-5909

E-mail: tech@MedChemExpress.com

Address: 1 Deer Park Dr, Suite Q, Monmouth Junction, NJ 08852, USA