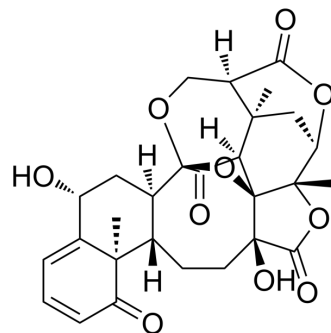


## 6-Epiphysalin G

Cat. No.:	HY-N8883
CAS No.:	76045-38-0
Molecular Formula:	C <sub>28</sub> H <sub>30</sub> O <sub>10</sub>
Molecular Weight:	526.53
Target:	Others
Pathway:	Others
Storage:	Please store the product under the recommended conditions in the Certificate of Analysis.



### BIOLOGICAL ACTIVITY

#### Description

6-Epiphysalin G is isolated from natural *Physalis alkekengi* var. *francheti*.<sup>[1]</sup>

### REFERENCES

[1]. Bunsho Makino, et al. Physalins Possessing an Endoperoxy Structure from *Physalis alkekengi* var. *francheti*. Structural Revision of Physalin K. Bull.Chem. 1995, 68:219-226.

**Caution: Product has not been fully validated for medical applications. For research use only.**

Tel: 609-228-6898

Fax: 609-228-5909

E-mail: tech@MedChemExpress.com

Address: 1 Deer Park Dr, Suite Q, Monmouth Junction, NJ 08852, USA