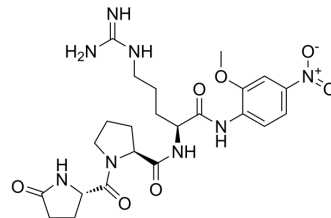


## pGlu-Pro-Arg-MNA

Cat. No.:	HY-P0022
CAS No.:	130835-45-9
Molecular Formula:	C <sub>23</sub> H <sub>32</sub> N <sub>8</sub> O <sub>7</sub>
Molecular Weight:	532.55
Sequence:	{pGlu}-Pro-Arg-MNA
Sequence Shortening:	{pGlu}-PR-MNA
Target:	Biochemical Assay Reagents
Pathway:	Others
Storage:	Please store the product under the recommended conditions in the Certificate of Analysis.



### BIOLOGICAL ACTIVITY

Description	pGlu-Pro-Arg-MNA is a chromogenic substrate.
In Vitro	Protein C activity is measured using the reagents, both with a partial thromboplastin time (aPTT) system as well as with a chromogenic substrate (pGlu-Pro-Arg-mNA) in a photometric method <sup>[1]</sup> . MCE has not independently confirmed the accuracy of these methods. They are for reference only.

### REFERENCES

[1]. Girolami A, et al. Heterozygous protein-S deficiency: a study of a large kindred. Acta Haematol. 1990;84(3):162-8.

**Caution: Product has not been fully validated for medical applications. For research use only.**

Tel: 609-228-6898

Fax: 609-228-5909

E-mail: tech@MedChemExpress.com

Address: 1 Deer Park Dr, Suite Q, Monmouth Junction, NJ 08852, USA