

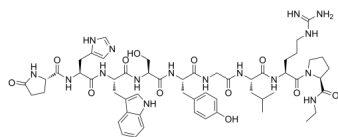
Fertirelin

Cat. No.: HY-P0053
Batch No.: 292611
CAS No.: 38234-21-8
Molecular Formula: C₅₅H₇₆N₁₆O₁₂

ANALYTICAL DATA

Theoretical: C(-), H(-), N(-), Peptide Content(≥60.0%)
Result: C(51.49%), H(6.528%), N(17.81%), Peptide Content(91.70%)

Chemical Structure:



Caution: Product has not been fully validated for medical applications. For research use only.

Tel: 609-228-6898

Fax: 609-228-5909

E-mail: tech@MedChemExpress.com

Address: 1 Deer Park Dr, Suite Q, Monmouth Junction, NJ 08852, USA