

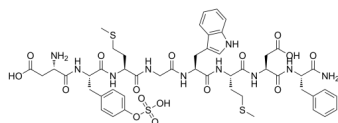
Sincalide

Cat. No.: HY-P0093
Batch No.: 256290
CAS No.: 25126-32-3
Molecular Formula: C₄₉H₆₂N₁₀O₁₆S₃

ANALYTICAL DATA

Theoretical: C(-), H(-), N(-), Peptide Content(≥60.0%)
Result: C(48.72%), H(5.32%), N(12.08%), Peptide Content(98.60%)

Chemical Structure:



Caution: Product has not been fully validated for medical applications. For research use only.

Tel: 609-228-6898

Fax: 609-228-5909

E-mail: tech@MedChemExpress.com

Address: 1 Deer Park Dr, Suite Q, Monmouth Junction, NJ 08852, USA