

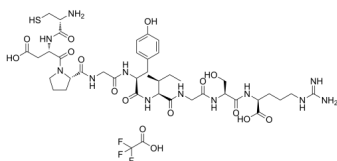
Laminin (925-933)(TFA)

Cat. No.: HY-P0131A
Batch No.: 142917
Molecular Formula: C₄₂H₆₃F₃N₁₂O₁₆S

ANALYTICAL DATA

Theoretical: C(-), H(-), N(-), Peptide Content(≥60.0%)
Result: C(41.94%), H(5.27%), N(12.83%), Peptide Content(73.80%)

Chemical Structure:



Caution: Product has not been fully validated for medical applications. For research use only.

Tel: 609-228-6898

Fax: 609-228-5909

E-mail: tech@MedChemExpress.com

Address: 1 Deer Park Dr, Suite Q, Monmouth Junction, NJ 08852, USA