

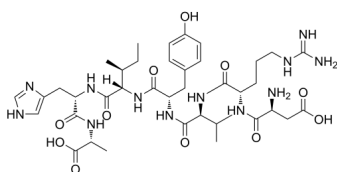
A 779

Cat. No.: HY-P0216
Batch No.: 241326
CAS No.: 159432-28-7
Molecular Formula: C₃₉H₆₀N₁₂O₁₁

ANALYTICAL DATA

Theoretical: C(-), H(-), N(-), Peptide Content(≥60.0%)
Result: C(43.15%), H(6.65%), N(15.79%), Peptide Content(82.00%)

Chemical Structure:



Caution: Product has not been fully validated for medical applications. For research use only.

Tel: 609-228-6898

Fax: 609-228-5909

E-mail: tech@MedChemExpress.com

Address: 1 Deer Park Dr, Suite Q, Monmouth Junction, NJ 08852, USA