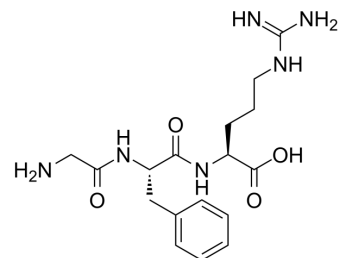


Gly-Phe-Arg

Cat. No.:	HY-P0296
CAS No.:	121822-47-7
Molecular Formula:	C ₁₇ H ₂₆ N ₆ O ₄
Molecular Weight:	378.43
Sequence:	Gly-Phe-Arg
Sequence Shortening:	GFR
Target:	Others
Pathway:	Others
Storage:	Please store the product under the recommended conditions in the Certificate of Analysis.



BIOLOGICAL ACTIVITY

Description	Gly-Phe-Arg is a superpotent synthetic tripeptide mimics of the mud-crab pumping pheromone.
In Vivo	Gly-Phe-Arg produces not only a statistically significant increase in the relative number of pumping mud crabs but also a substantial increase in the pumping rate ratio ^[1] . MCE has not independently confirmed the accuracy of these methods. They are for reference only.

REFERENCES

[1]. Pettis RJ, et al. Superpotent synthetic tripeptide mimics of the mud-crab pumping pheromone. Int J Pept Protein Res. 1993 Oct;42(4):312-9.

Caution: Product has not been fully validated for medical applications. For research use only.

Tel: 609-228-6898

Fax: 609-228-5909

E-mail: tech@MedChemExpress.com

Address: 1 Deer Park Dr, Suite Q, Monmouth Junction, NJ 08852, USA