

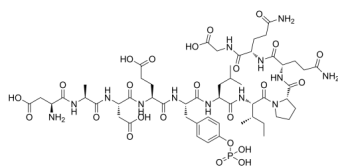
EGF Receptor Substrate 2 (Phospho-Tyr5)

Cat. No.: HY-P0320
Batch No.: 101232
CAS No.: 149261-42-7
Molecular Formula: C₅₄H₈₂N₁₃O₂₄P

ANALYTICAL DATA

Theoretical: C(-), H(-), N(-), Peptide Content(≥60.0%)
Result: C(44.52%), H(6.62%), N(12.72%), Peptide Content(92.80%)

Chemical Structure:



Caution: Product has not been fully validated for medical applications. For research use only.

Tel: 609-228-6898

Fax: 609-228-5909

E-mail: tech@MedChemExpress.com

Address: 1 Deer Park Dr, Suite Q, Monmouth Junction, NJ 08852, USA