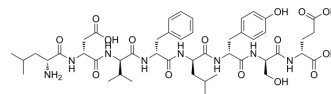


CD24/Siglec-10 blocking peptide, CSBP

Cat. No.:	HY-P10091
Molecular Formula:	C ₄₇ H ₆₈ N ₈ O ₁₅
Molecular Weight:	985.09
Sequence:	{d-Leu}-{d-Asp}-{d-Val}-{d-Phe}-{d-Leu}-{d-Tyr}-{d-Ser}-{d-Glu}
Sequence Shortening:	{d-Leu}-{d-Asp}-{d-Val}-{d-Phe}-{d-Leu}-{d-Tyr}-{d-Ser}-{d-Glu}
Target:	PD-1/PD-L1
Pathway:	Immunology/Inflammation
Storage:	Sealed storage, away from moisture
	Powder -80°C 2 years
	-20°C 1 year



* In solvent : -80°C, 6 months; -20°C, 1 month (sealed storage, away from moisture)

SOLVENT & SOLUBILITY

In Vitro

DMSO : 50 mg/mL (50.76 mM; Need ultrasonic)
 H₂O : < 0.1 mg/mL (ultrasonic) (insoluble)

Preparing Stock Solutions	Solvent Concentration	Mass	1 mg	5 mg	10 mg
	1 mM		1.0151 mL	5.0757 mL	10.1514 mL
	5 mM		0.2030 mL	1.0151 mL	2.0303 mL
	10 mM		0.1015 mL	0.5076 mL	1.0151 mL

Please refer to the solubility information to select the appropriate solvent.

BIOLOGICAL ACTIVITY

Description

CD24/Siglec-10 blocking peptide, CSBP can not only block the interaction of CD24/Siglec-10 but also PD-1/PD-L1. CD24/Siglec-10 blocking peptide, CSBP can induce the phagocytosis of tumor cell^[1].

REFERENCES

[1]. Wenhui Shen, et al. Discovery of a novel dual-targeting D-peptide to block CD24/Siglec-10 and PD-1/PD-L1 interaction and synergize with radiotherapy for cancer immunotherapy. J Immunother Cancer. 2023 Jun;11(6):e007068.

Caution: Product has not been fully validated for medical applications. For research use only.

Tel: 609-228-6898

Fax: 609-228-5909

E-mail: tech@MedChemExpress.com

Address: 1 Deer Park Dr, Suite Q, Monmouth Junction, NJ 08852, USA