

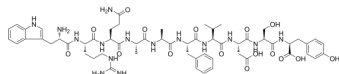
10Panx

Cat. No.: HY-P1137
Batch No.: 417383
CAS No.: 955091-53-9
Molecular Formula: C₅₈H₇₉N₁₅O₁₆

ANALYTICAL DATA

Theoretical: C(-), H(-), N(-), Peptide Content($\geq 60.0\%$)
Result: C(51.95%), H(6.45%), N(15.90%), Peptide Content(94.0%)

Chemical Structure:



Caution: Product has not been fully validated for medical applications. For research use only.

Tel: 609-228-6898

Fax: 609-228-5909

E-mail: tech@MedChemExpress.com

Address: 1 Deer Park Dr, Suite Q, Monmouth Junction, NJ 08852, USA