

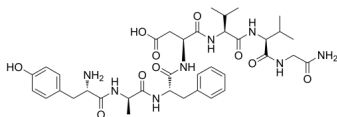
Deltorpin I

Cat. No.: HY-P1336
Batch No.: 205212
CAS No.: 122752-15-2
Molecular Formula: C₃₇H₅₂N₈O₁₀

ANALYTICAL DATA

Theoretical: C(-), H(-), N(-), Peptide Content(≥60.0%)
Result: C(51.55%), H(6.84%), N(13.35%), Peptide Content(91.60%)

Chemical Structure:



Caution: Product has not been fully validated for medical applications. For research use only.

Tel: 609-228-6898

Fax: 609-228-5909

E-mail: tech@MedChemExpress.com

Address: 1 Deer Park Dr, Suite Q, Monmouth Junction, NJ 08852, USA