

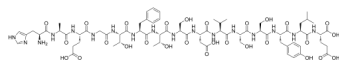
HAEGTFTSDVSSYLE

Cat. No.: HY-P1445
Batch No.: 28594
CAS No.: 926018-57-7
Molecular Formula: C₇₁H₁₀₃N₁₇O₂₈

ANALYTICAL DATA

Theoretical: C(-), H(-), N(-), Peptide Content(≥60.0%)
Result: C(38.62%), H(4.98%), N(9.70%), Peptide Content(66.80%)

Chemical Structure:



Caution: Product has not been fully validated for medical applications. For research use only.

Tel: 609-228-6898

Fax: 609-228-5909

E-mail: tech@MedChemExpress.com

Address: 1 Deer Park Dr, Suite Q, Monmouth Junction, NJ 08852, USA