

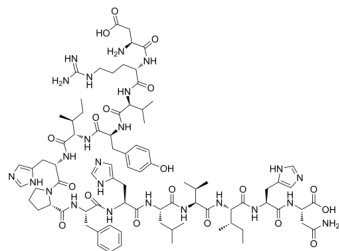
Angiotensinogen (1-14), human

Cat. No.: HY-P1486
Batch No.: 103519
CAS No.: 104180-23-6
Molecular Formula: C₈₃H₁₂₂N₂₄O₁₉

ANALYTICAL DATA

Theoretical: C(-), H(-), N(-), Peptide Content(≥60.0%)
Result: C(51.26%), H(6.93%), N(15.60%), Peptide Content(81.71%)

Chemical Structure:



Caution: Product has not been fully validated for medical applications. For research use only.

Tel: 609-228-6898

Fax: 609-228-5909

E-mail: tech@MedChemExpress.com

Address: 1 Deer Park Dr, Suite Q, Monmouth Junction, NJ 08852, USA