

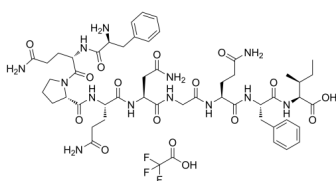
## Nucleoprotein (396-404) (TFA)

Cat. No.: HY-P1571A  
Batch No.: 64236  
Molecular Formula: C<sub>52</sub>H<sub>72</sub>F<sub>3</sub>N<sub>13</sub>O<sub>16</sub>

### ANALYTICAL DATA

Theoretical: C(-), H(-), N(-), Peptide Content(≥60.0%)  
Result: C(48.41%), H(6.46%), N(13.98%), Peptide Content(82.77%)

Chemical Structure:



**Caution: Product has not been fully validated for medical applications. For research use only.**

Tel: 609-228-6898

Fax: 609-228-5909

E-mail: [tech@MedChemExpress.com](mailto:tech@MedChemExpress.com)

Address: 1 Deer Park Dr, Suite Q, Monmouth Junction, NJ 08852, USA