

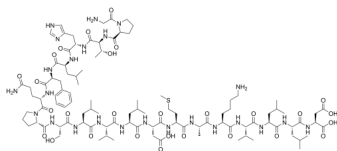
IRBP (1-20), human

Cat. No.: HY-P1587
Batch No.: 112059
CAS No.: 298202-25-2
Molecular Formula: C₁₀₁H₁₆₄N₂₄O₂₈S

ANALYTICAL DATA

Theoretical: C(-), H(-), N(-), Peptide Content(≥60.0%)
Result: C(49.56%), H(7.91%), N(13.55%), Peptide Content(88.40%)

Chemical Structure:



Caution: Product has not been fully validated for medical applications. For research use only.

Tel: 609-228-6898

Fax: 609-228-5909

E-mail: tech@MedChemExpress.com

Address: 1 Deer Park Dr, Suite Q, Monmouth Junction, NJ 08852, USA