

## CREBtide

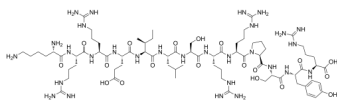
---

Cat. No.: HY-P1595  
Batch No.: 111847  
CAS No.: 149155-45-3  
Molecular Formula: C<sub>73</sub>H<sub>129</sub>N<sub>29</sub>O<sub>19</sub>

### ANALYTICAL DATA

Theoretical: C(-), H(-), N(-), Peptide Content(≥60.0%)  
Result: C(44.39%), H(7.61%), N(17.90%), Peptide Content(75.70%)

Chemical Structure:



**Caution: Product has not been fully validated for medical applications. For research use only.**

Tel: 609-228-6898

Fax: 609-228-5909

E-mail: [tech@MedChemExpress.com](mailto:tech@MedChemExpress.com)

Address: 1 Deer Park Dr, Suite Q, Monmouth Junction, NJ 08852, USA