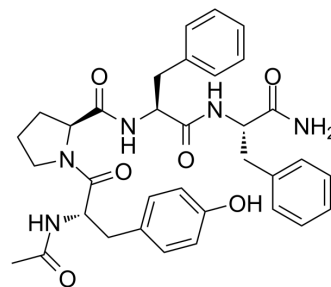


Acetyl tetrapeptide-15

Cat. No.:	HY-P1626
CAS No.:	928007-64-1
Molecular Formula:	C ₃₄ H ₃₉ N ₅ O ₆
Molecular Weight:	613.7
Target:	Opioid Receptor
Pathway:	GPCR/G Protein; Neuronal Signaling
Storage:	Sealed storage, away from moisture and light Powder -80°C 2 years -20°C 1 year * In solvent : -80°C, 6 months; -20°C, 1 month (sealed storage, away from moisture and light)



SOLVENT & SOLUBILITY

In Vitro	DMSO : 100 mg/mL (162.95 mM; Need ultrasonic)				
		Solvent Concentration	Mass		
	Preparing Stock Solutions		1 mg	5 mg	10 mg
		1 mM	1.6295 mL	8.1473 mL	16.2946 mL
		5 mM	0.3259 mL	1.6295 mL	3.2589 mL
10 mM		0.1629 mL	0.8147 mL	1.6295 mL	
Please refer to the solubility information to select the appropriate solvent.					
In Vivo	<ol style="list-style-type: none"> Add each solvent one by one: 10% DMSO >> 40% PEG300 >> 5% Tween-80 >> 45% saline Solubility: ≥ 2.5 mg/mL (4.07 mM); Clear solution Add each solvent one by one: 10% DMSO >> 90% (20% SBE-β-CD in saline) Solubility: ≥ 2.5 mg/mL (4.07 mM); Clear solution Add each solvent one by one: 10% DMSO >> 90% corn oil Solubility: ≥ 2.5 mg/mL (4.07 mM); Clear solution 				

BIOLOGICAL ACTIVITY

Description	Acetyl tetrapeptide-15 is a synthetic peptide used in the cosmetics for sensitive skin. Acetyl tetrapeptide-15 is derived from endomorphin-2 (Tyr-Pro-Phe-Phe-NH ₂), a human μ-opioid agonist with selective anti-nociceptive effect. Acetyl tetrapeptide-15 reduces skin hyperreactivity producing inflammatory, chronic and neuropathic pain, by increasing the threshold of neuronal excitability in μ-opioid receptor via an endorphin-like pathway ^[1] .
--------------------	--

REFERENCES

[1]. Resende DISP, et al. Usage of Synthetic Peptides in Cosmetics for Sensitive Skin. Pharmaceuticals (Basel). 2021;14(8):702.

Caution: Product has not been fully validated for medical applications. For research use only.

Tel: 609-228-6898

Fax: 609-228-5909

E-mail: tech@MedChemExpress.com

Address: 1 Deer Park Dr, Suite Q, Monmouth Junction, NJ 08852, USA