

## HIF-1 alpha (556-574)

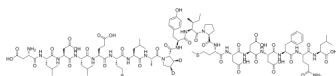
---

Cat. No.: HY-P1888  
Batch No.: 249715  
CAS No.: 1201633-99-9  
Molecular Formula: C<sub>101</sub>H<sub>150</sub>D<sub>2</sub>N<sub>20</sub>O<sub>34</sub>S<sub>2</sub>

### ANALYTICAL DATA

Theoretical: C(-), H(-), N(-), Peptide Content(≥60.0%)  
Result: C(52.15%), H(7.08%), N(12.35%), Peptide Content(99.40%)

Chemical Structure:



**Caution: Product has not been fully validated for medical applications. For research use only.**

Tel: 609-228-6898

Fax: 609-228-5909

E-mail: [tech@MedChemExpress.com](mailto:tech@MedChemExpress.com)

Address: 1 Deer Park Dr, Suite Q, Monmouth Junction, NJ 08852, USA