

## Activated Protein C (390-404), human

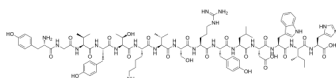
---

Cat. No.: HY-P1918  
Batch No.: 95613  
CAS No.: 146340-20-7  
Molecular Formula: C<sub>91</sub>H<sub>130</sub>N<sub>22</sub>O<sub>23</sub>

### ANALYTICAL DATA

Theoretical: C(-), H(-), N(-), Peptide Content(≥60.0%)  
Result: C(51.47%), H(7.12%), N(14.02%), Peptide Content(86.54%)

Chemical Structure:



**Caution: Product has not been fully validated for medical applications. For research use only.**

Tel: 609-228-6898

Fax: 609-228-5909

E-mail: [tech@MedChemExpress.com](mailto:tech@MedChemExpress.com)

Address: 1 Deer Park Dr, Suite Q, Monmouth Junction, NJ 08852, USA