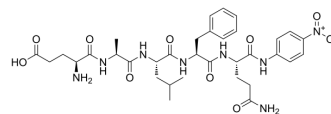


Glu-Ala-Leu-Phe-Gln-pNA

Cat. No.:	HY-P3794
CAS No.:	198551-00-7
Molecular Formula:	C ₃₄ H ₄₆ N ₈ O ₁₀
Molecular Weight:	726.78
Sequence Shortening:	EALFQ-pNA
Target:	Others
Pathway:	Others
Storage:	Please store the product under the recommended conditions in the Certificate of Analysis.



BIOLOGICAL ACTIVITY

Description

Glu-Ala-Leu-Phe-Gln-pNA is a Chiba virus 3C-like protease (CVP) substrate^[1].

REFERENCES

[1]. Nakamura K, et al. A norovirus protease structure provides insights into active and substrate binding site integrity. J Virol. 2005 Nov;79(21):13685-93.

Caution: Product has not been fully validated for medical applications. For research use only.

Tel: 609-228-6898

Fax: 609-228-5909

E-mail: tech@MedChemExpress.com

Address: 1 Deer Park Dr, Suite Q, Monmouth Junction, NJ 08852, USA