

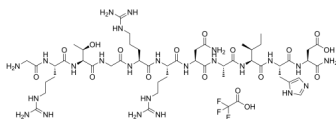
## PKI (14-24)amide (TFA)

Cat. No.: HY-P3929A  
Batch No.: 261474  
CAS No.: 1293946-39-0  
Molecular Formula:  $C_{51}H_{87}F_3N_{24}O_{17}$

### ANALYTICAL DATA

Theoretical: C(-), H(-), N(-), Peptide Content( $\geq 60.0\%$ )  
Result: C(37.12%), H(5.17%), N(18.32%), Peptide Content(68.20%)

Chemical Structure:



**Caution: Product has not been fully validated for medical applications. For research use only.**

Tel: 609-228-6898

Fax: 609-228-5909

E-mail: [tech@MedChemExpress.com](mailto:tech@MedChemExpress.com)

Address: 1 Deer Park Dr, Suite Q, Monmouth Junction, NJ 08852, USA