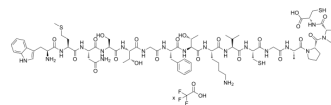


HCV-1 e2 Protein (554-569) (TFA)

Cat. No.:	HY-P4027A
Molecular Formula:	$C_{74}H_{111}N_{19}O_{21}S_3 \cdot xC_2HF_3O_2$
Sequence:	Trp-Met-Asn-Ser-Thr-Gly-Phe-Thr-Lys-Val-Cys-Gly-Ala-Pro-Pro-Cys
Sequence Shortening:	WMNSTGFTKVCGAPPC
Target:	HCV
Pathway:	Anti-infection
Storage:	Please store the product under the recommended conditions in the Certificate of Analysis.



BIOLOGICAL ACTIVITY

Description

HCV-1 e2 Protein (554-569) TFA is one of the main antigenic regions of HCV envelope 2 (e2) protein. The HCV-1 e2 Protein (554-569) TFA contains a putative N-glycosylation site, which was previously thought to influence the immune recognition of e2^[1].

REFERENCES

[1]. Zhang ZX, et al. Antigenic structure of the hepatitis C virus envelope 2 protein. Clin Exp Immunol. 1994 Dec;98(3):382-7.

Caution: Product has not been fully validated for medical applications. For research use only.

Tel: 609-228-6898

Fax: 609-228-5909

E-mail: tech@MedChemExpress.com

Address: 1 Deer Park Dr, Suite Q, Monmouth Junction, NJ 08852, USA