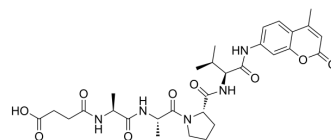


Suc-Ala-Ala-Pro-Val-AMC

Cat. No.:	HY-P4126
CAS No.:	113277-37-5
Molecular Formula:	C ₃₀ H ₃₉ N ₅ O ₉
Molecular Weight:	613.66
Sequence:	{Suc}-Ala-Ala-Pro-Val-{AMC}
Sequence Shortening:	{Suc}-AAPV-{AMC}
Target:	Elastase
Pathway:	Metabolic Enzyme/Protease
Storage:	Please store the product under the recommended conditions in the Certificate of Analysis.



BIOLOGICAL ACTIVITY

Description	Suc-Ala-Ala-Pro-Val-AMC, a tetrapeptide, is an elastase substrate. Suc-Ala-Ala-Pro-Val-AMC can be used for determining elastase activity ^{[1][2]} .
--------------------	--

REFERENCES

[1]. Baici A, et al. Inhibition of human elastase from polymorphonuclear leucocytes by gold sodium thiomalate and pentosan polysulfate (SP-54). *Biochem Pharmacol.* 1981 Apr 1;30(7):703-8.

[2]. Fontenot KR, et al. Designing cellulosic and nanocellulosic sensors for interface with a protease sequestrant wound-dressing prototype: Implications of material selection for dressing and protease sensor design. *J Biomater Appl.* 2017 Nov;32(5):622-637.

Caution: Product has not been fully validated for medical applications. For research use only.

Tel: 609-228-6898

Fax: 609-228-5909

E-mail: tech@MedChemExpress.com

Address: 1 Deer Park Dr, Suite Q, Monmouth Junction, NJ 08852, USA