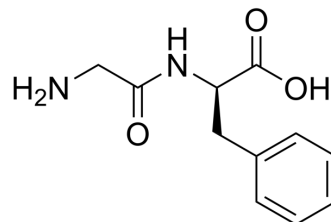


Gly-d-Phe

Cat. No.:	HY-P4236
CAS No.:	34258-14-5
Molecular Formula:	C ₁₁ H ₁₄ N ₂ O ₃
Molecular Weight:	222.24
Sequence:	H-Gly-[d-Phe]-OH
Sequence Shortening:	P-[d-Phe]-F
Target:	Others
Pathway:	Others
Storage:	Please store the product under the recommended conditions in the Certificate of Analysis.



BIOLOGICAL ACTIVITY

Description	Gly-d-Phe is an affinity ligand for Thermolysin (HY-P1748) ^[1] . Gly-d-Phe can be used as the substrate of membrane dipeptidase (MDP) ^[2] .
--------------------	---

REFERENCES

- [1]. Yasukawa K, et al. Characterization of Gly-D-Phe, Gly-L-Leu, and D-Phe as affinity ligands to thermolysin. *Protein Expr Purif.* 2006 Apr;46(2):332-6.
- [2]. Ikeda H, et al. Localization and activity of membrane dipeptidase in bovine ciliary epithelium. *Invest Ophthalmol Vis Sci.* 2003 Jan;44(1):37-43.

Caution: Product has not been fully validated for medical applications. For research use only.

Tel: 609-228-6898

Fax: 609-228-5909

E-mail: tech@MedChemExpress.com

Address: 1 Deer Park Dr, Suite Q, Monmouth Junction, NJ 08852, USA