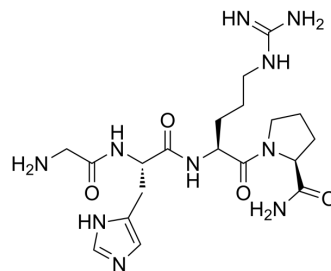


## H-Gly-His-Arg-Pro-NH<sub>2</sub>

Cat. No.:	HY-P4278
CAS No.:	209623-54-1
Molecular Formula:	C <sub>19</sub> H <sub>32</sub> N <sub>10</sub> O <sub>4</sub>
Molecular Weight:	464.52
Sequence:	H-Gly-His-Arg-Pro-NH <sub>2</sub>
Sequence Shortening:	GHRP-NH <sub>2</sub>
Target:	Others
Pathway:	Others
Storage:	Please store the product under the recommended conditions in the Certificate of Analysis.



### BIOLOGICAL ACTIVITY

#### Description

H-Gly-His-Arg-Pro-NH is a biologically active polypeptide that can be found by peptide screening. Peptide screening is a research tool that pools active peptides primarily by immunoassay. Peptide screening can be used for protein interaction, functional analysis, epitope screening, especially in the field of drug research and development<sup>[1]</sup>.

### REFERENCES

- [1]. Birnbaum S, et al. Peptide screening. *Current Opinion in Biotechnology*, 1992, 3(1): 49-54.
- [2]. Peptide Library. MedChemExpress.

**Caution: Product has not been fully validated for medical applications. For research use only.**

Tel: 609-228-6898

Fax: 609-228-5909

E-mail: tech@MedChemExpress.com

Address: 1 Deer Park Dr, Suite Q, Monmouth Junction, NJ 08852, USA